

WEEKLY COVID-19 TRANSPORT SECTOR KEY INDICATORS – 3 August 2020

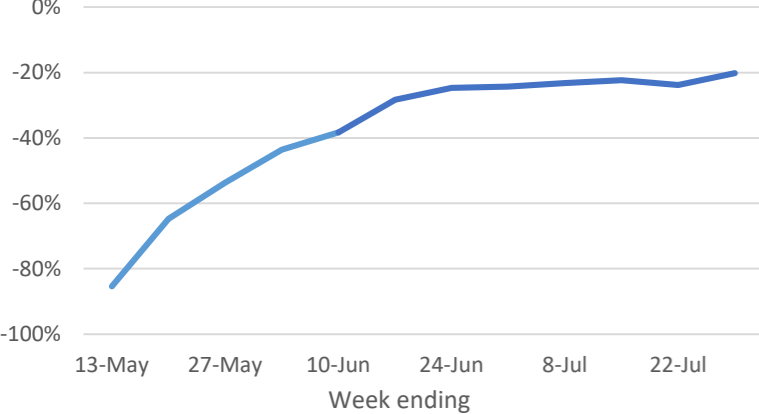
The transport dashboard contains primarily key lag indicators. Therefore, the impact of COVID-19 may not necessarily be evident immediately in the graphs. This will be updated weekly and will focus on those indicators (or components of indicators) showing an increase or decrease, when compared to the previous year. The transport dashboard is supplementary to indicators captured in other COVID-19 dashboards, such as economic indicators.

Public Transport

Public Transport (Bus) Patronage

(Only for Auckland, Wellington & Christchurch - vs equivalent week in 2019)

No alert level : Level 1 : Level 2 : Level 3 : Level 4



Change in public transport (bus) patronage week ending 29 July 2020 compared to last week (22 July 2020)

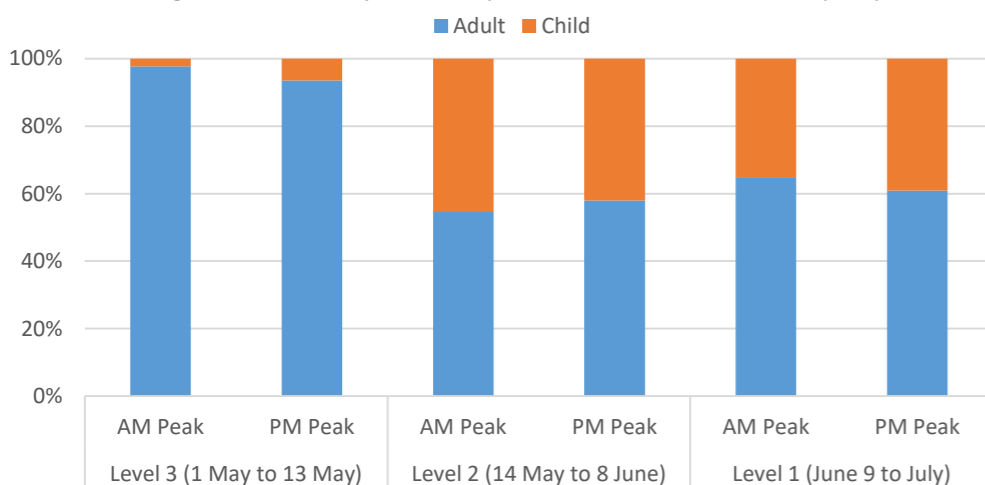
16%

Summary of impacts to the transport system:

- Comparisons to 2019** – The week ending 26 April 2019 had **two public holidays** (Easter Monday and Anzac Day) and the week ending 7 June 2020 was the **Queen's Birthday**. This resulted in a significant change in travel patterns for those weeks (e.g. fewer people travelling for work, fewer services operating).
- Public transport** – For the week ending 29 July, combined bus patronage for Auckland, Wellington and Christchurch was **20% lower** compared to the equivalent week last year, but **increased 16%** compared to the previous week this year (22 July 2020). Auckland train patronage was **27% lower** compared to the equivalent week last year, but **increased 24%** compared to the previous week. Auckland ferry patronage was **21% lower** in the week ending 29 July compared to the equivalent week last year, **increased 16%** compared to the previous week.
- Road traffic** – For the week ending 21 July, average speeds are only slightly higher compared to the equivalent week last year, implying that road traffic has almost returned to pre-Covid levels. Traffic count data for the week ending 27 July, however, indicates that Auckland traffic is 6% lower compared to last year. Traffic counts for Christchurch and Dunedin are not included in today's dashboard due to a lack of available data.
- Air travel** – For the week ending 29 July, international passenger arrivals was **98% lower** compared to the equivalent week last year. There was an **increase of 88% in** international arrivals compared to the previous week (ending 22 July).
- Rail freight** – For the week ending 26 July, KiwiRail's freight was **24% lower** compared to the equivalent week last year and **decreased 11%** compared to the previous week this year (19 July).
- Heavy vehicle travel** – As of 1 July the total distance heavy vehicles travelled has **increased 4%** compared to 24 July, and visits by heavy vehicles to ports has **decreased 3%** on average.
- Cook Strait** – For the week ending 29 July 2020, truck boardings on the Interislander **decreased 10%** compared to the previous week (ending 22 July) and passenger boardings **decreased 42%** compared to the previous week.
- Imports and Exports: Sea** – Imports were **8% lower** and exports were **7% lower** in June 2020 compared to June 2019. Fish exports seemed to have recovered to previous year levels in June 2020. July data is still incomplete.
- Motor Vehicle Registrations** – Total new and NZ-new registrations for the 4 weeks ending the 29th of July were 93% compared to the equivalent weeks in 2019: for EVs the equivalent percentage was 80%.
- Road fatalities** – There has been **54** road deaths from **49** fatal crashes so far for Level 1 that began Tuesday 9 June. During Level 4 (2359 hours Wednesday 25 March to 2359 Monday 27 April) there were **13** road deaths from **13** fatal crashes; during Level 3 (2359 Monday 27 April to 2359 Wednesday 13 May) there were **7** road deaths from **7** fatal crashes; and during Level 2 (2359 Wednesday 13 May to midnight Monday 8 June) there were **24** road deaths from **22** fatal crashes. As at midnight 02 August there were **178** road fatalities year to date, this is **30** fewer road fatalities than the same time last year.
- Self-reported behaviours and attitudes** – Over the last twelve weeks, attitudinal surveys were conducted as part of Waka Kotahi's Sector Research Programme:
 - Under Alert Level 1 most modes of transportation (walking, train, ferry, taxi, car and motorcycle) are seeing usage similar to their pre-Covid behaviour. However, this is not the case for some modes of transportation (cycle, bus and plane) which are still being used at levels significantly lower than they were pre-Covid.
 - Of all respondents who reported reduced use of public transport, only **8%** said this was because reduced services meant it was no longer convenient (down from **11-18%** during Alert Levels 4, 3, and 2). However, only **9%** said this was because they were using essential journeys as an opportunity for exercise instead (coincidentally also down from **11-18%** during Alert Levels 4, 3, and 2).
 - During Alert Level 1 only **8%** of respondents said they cannot easily get where they need to go (down from **10-16%** during Alert Levels 4, 3, and 2).
 - During Alert Level 1 only **5%** of respondents said they did not leave their house for any reason (down from **8-17%** during Alert Levels 4, 3, and 2).

Average bus patronage by peak time and proportion of users

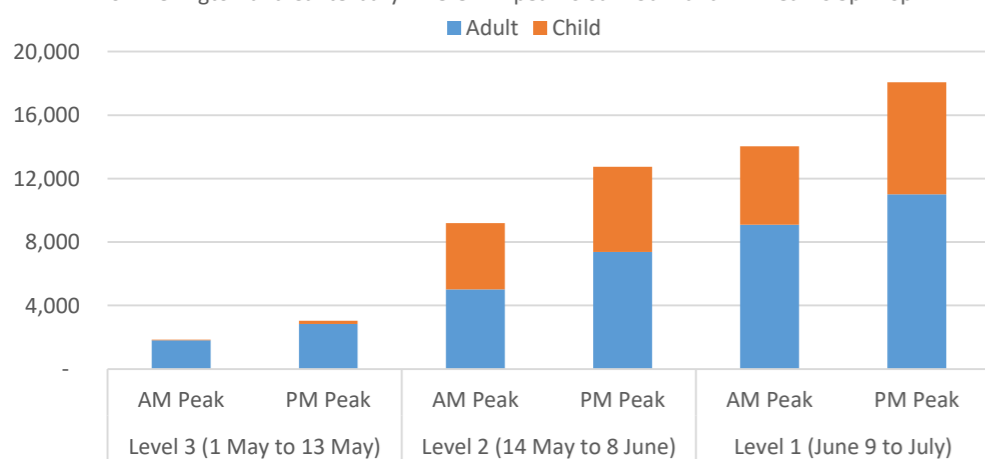
For Wellington and Canterbury where AM peak is 6am-9am and PM Peak is 3pm-6pm



Source: Environment Canterbury, Greater Wellington & Waka Kotahi

Average bus patronage by peak time and user

For Wellington and Canterbury where AM peak is 6am-9am and PM Peak is 3pm-6pm

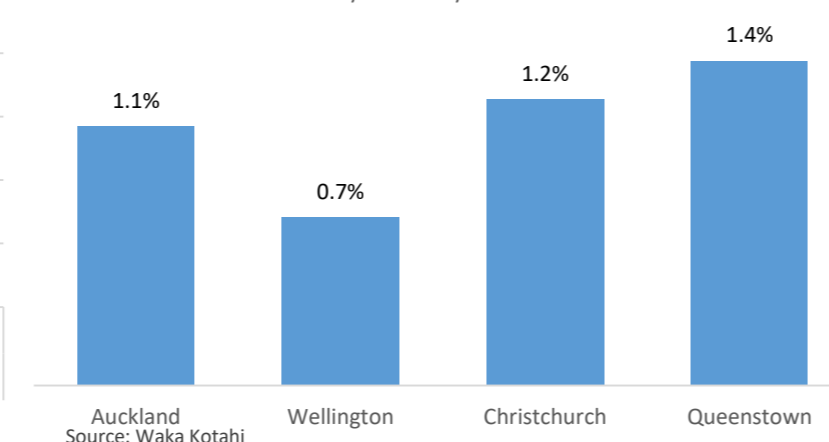


Source: Environment Canterbury, Greater Wellington & Waka Kotahi

Road Traffic and Speed

Change in speed of Traffic Flowing Through Urban Areas

The change in the average travel speeds as of 21 July compared to same week last year for key urban areas.



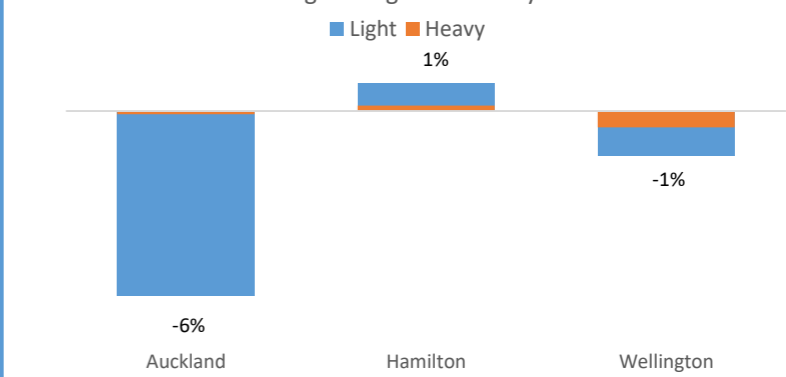
Source: Waka Kotahi

Change in average speeds for week ending 21 July compared to previous week (14 July 2020)

2%

Total traffic count flowing through key urban areas

Week ending 27 July compared to same week last year. Labels refer to total change for light and heavy vehicles



Source: Waka Kotahi

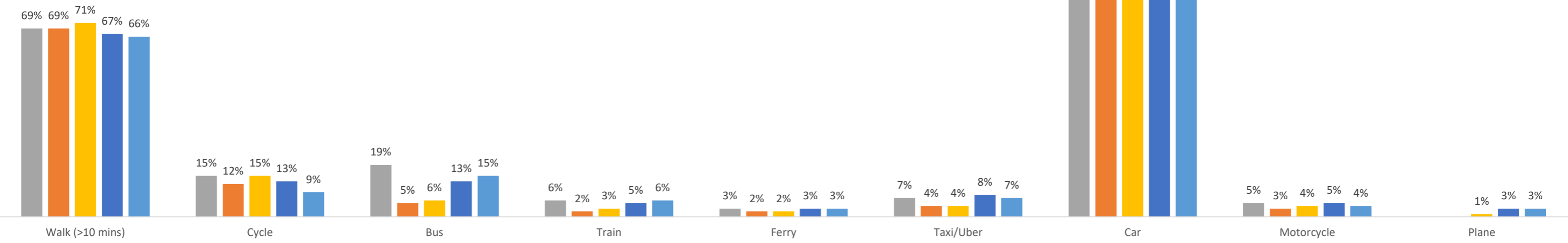
Change in overall traffic counts for week ending 27 July compared to previous week (20 July 2020)

<1%

Attitudinal survey results

Mode usage by % of respondents

■ Usual (pre-Covid) ■ Level 4 ■ Level 3 ■ Level 2 ■ Level 1

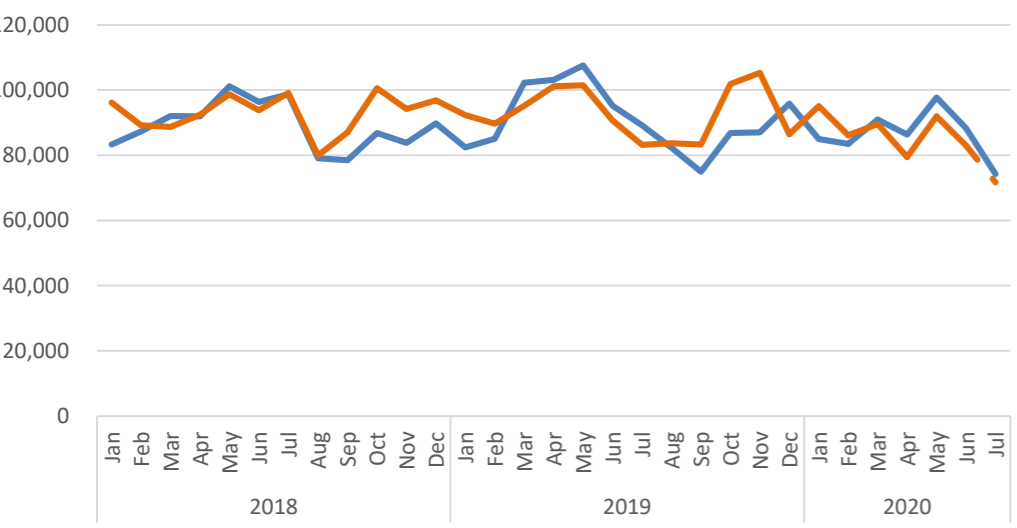


Source: Waka Kotahi Sector Research Programme

Imports and Exports - Sea

Imports & Exports - Containers (TEU)

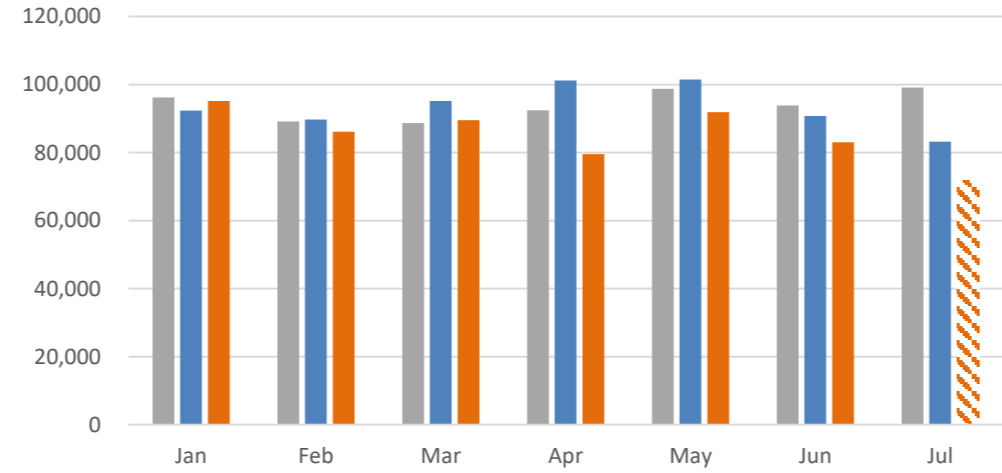
— Export — Import



Source: Ministry of Transport

Imports - Containers (TEU)

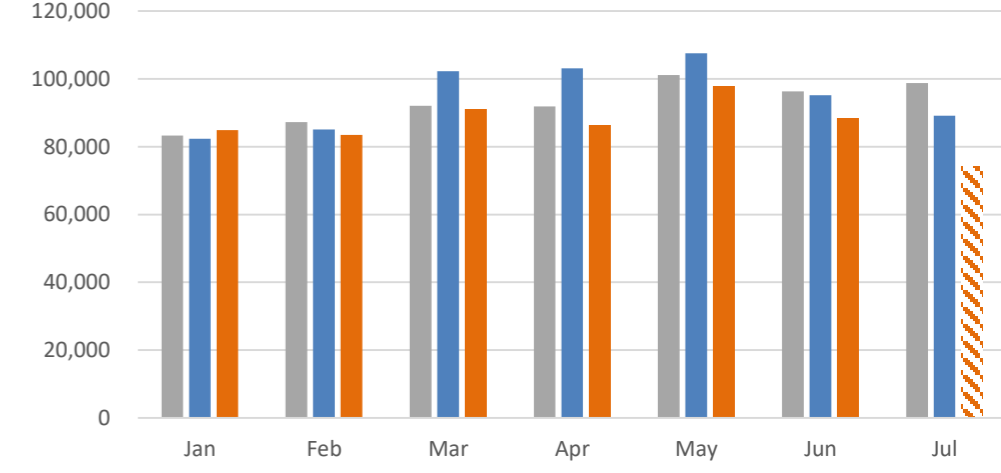
■ 2018 ■ 2019 ■ 2020



Source: Ministry of Transport

Exports - Containers (TEU)

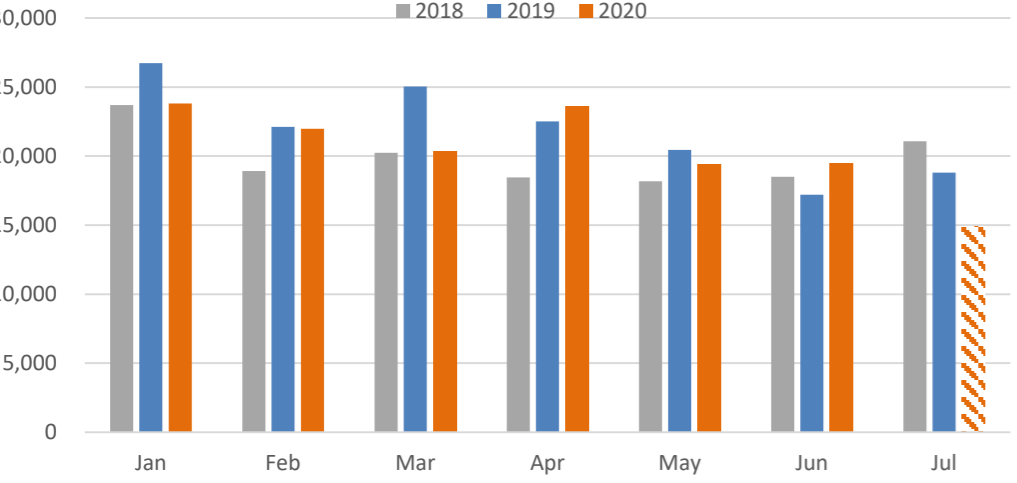
■ 2018 ■ 2019 ■ 2020



Source: Ministry of Transport

Dairy Exports - Containers (TEU)

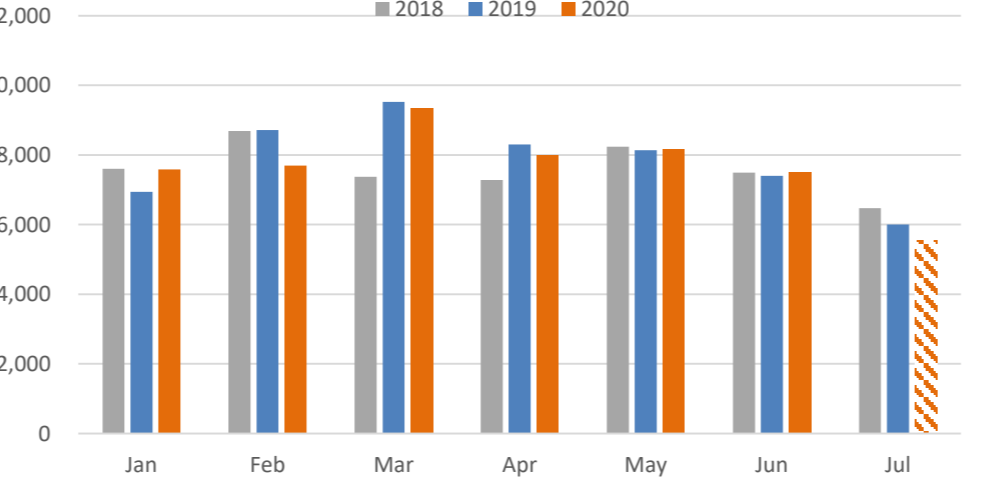
■ 2018 ■ 2019 ■ 2020



Source: Ministry of Transport

Meat Exports - Containers (TEU)

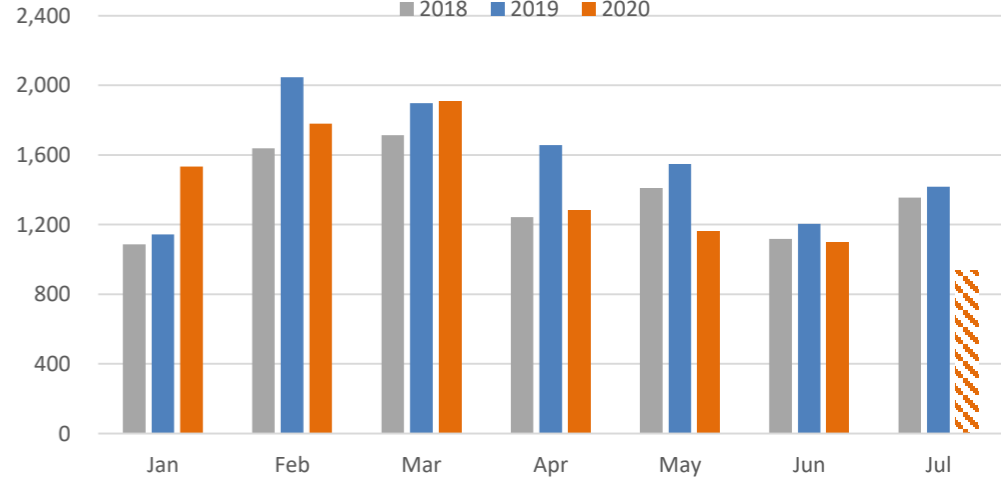
■ 2018 ■ 2019 ■ 2020



Source: Ministry of Transport

Fish Exports - Containers (TEU)

■ 2018 ■ 2019 ■ 2020



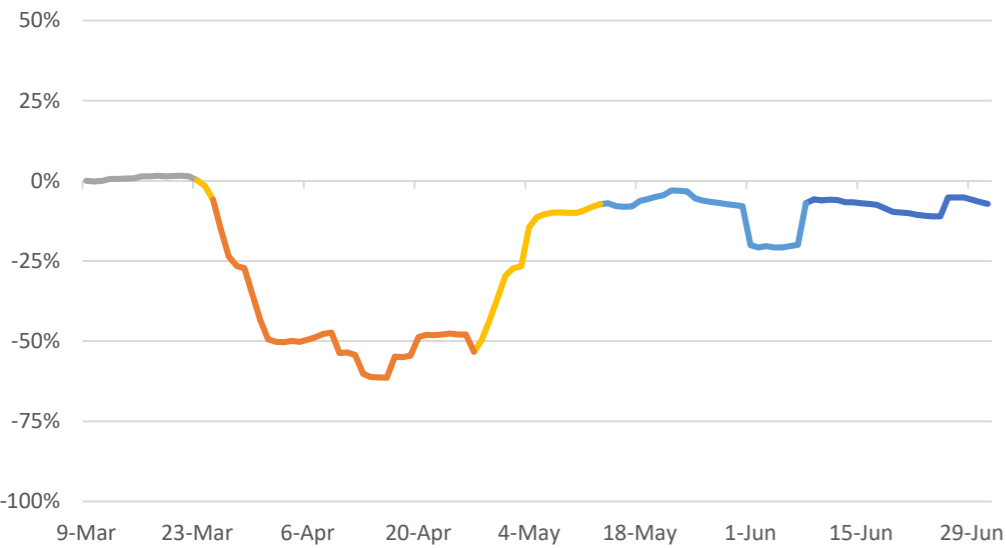
Source: Ministry of Transport

Heavy vehicle travel

Daily distance change for heavy vehicles

compared to 9 March 2020

No alert level : Level 1 : Level 2 : Level 3 : Level 4

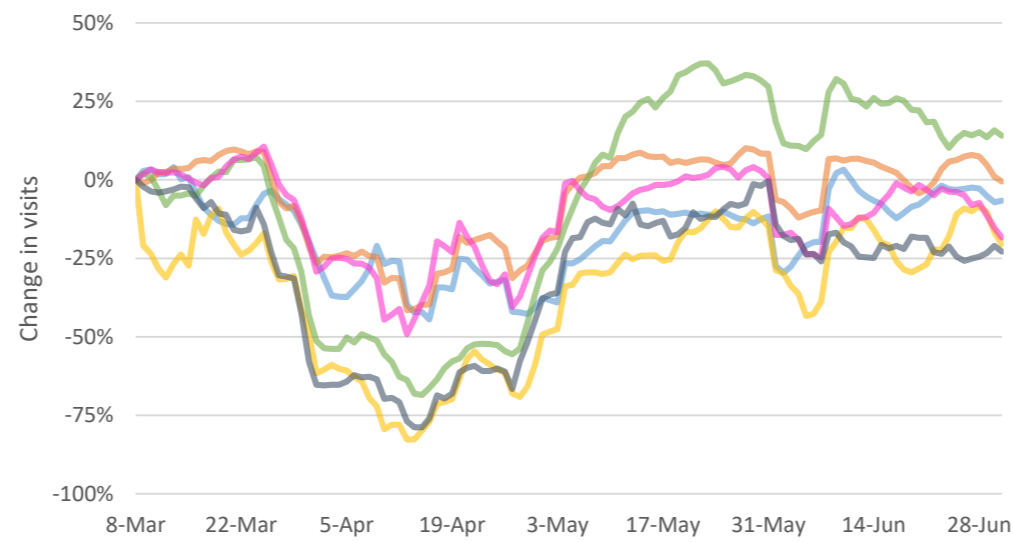


Source: EROAD

Daily heavy vehicle visits to ports

compared to 9 March

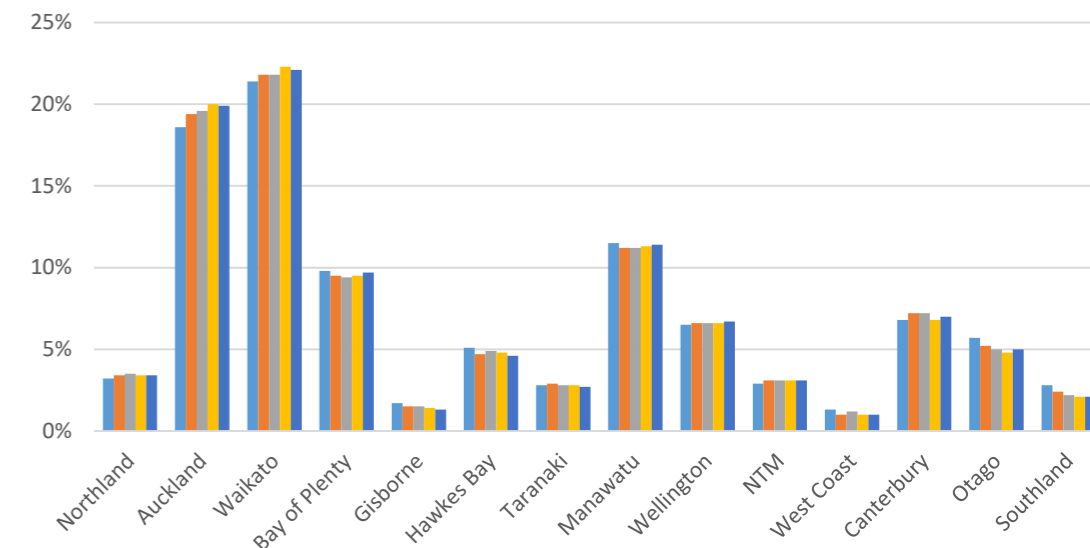
Auckland Tauranga Taranaki Picton Lyttleton Bluff



Source: EROAD

Proportion of interregional travel

w/c 2nd March 21-28 days ago 14-21 days ago 7-14 days ago 0-7 days ago

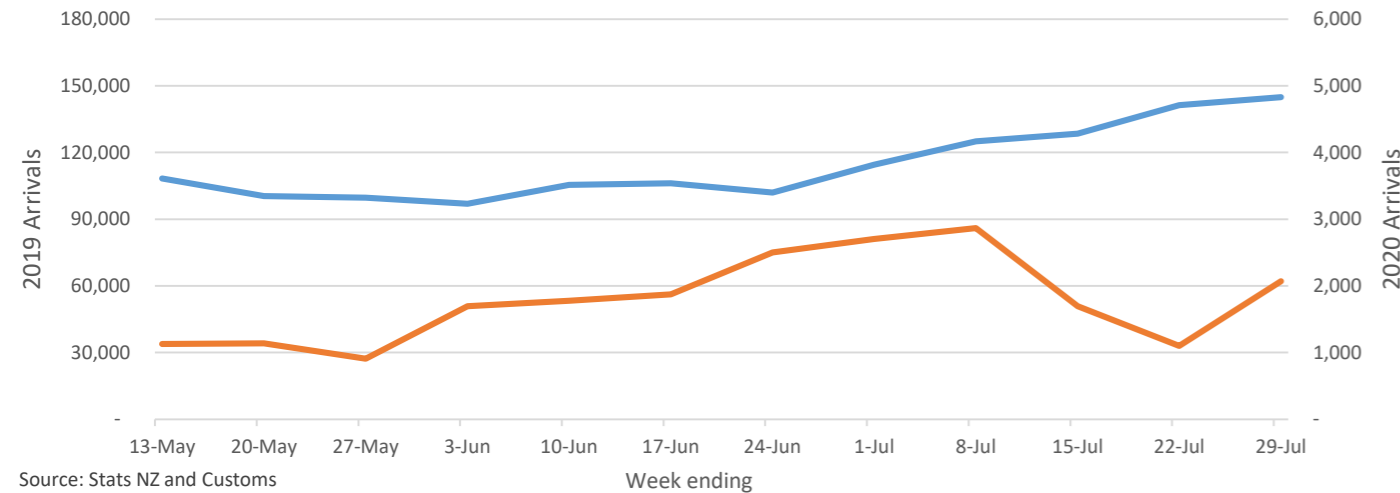


Source: EROAD

Air Travel

International passenger arrivals

2019 2020



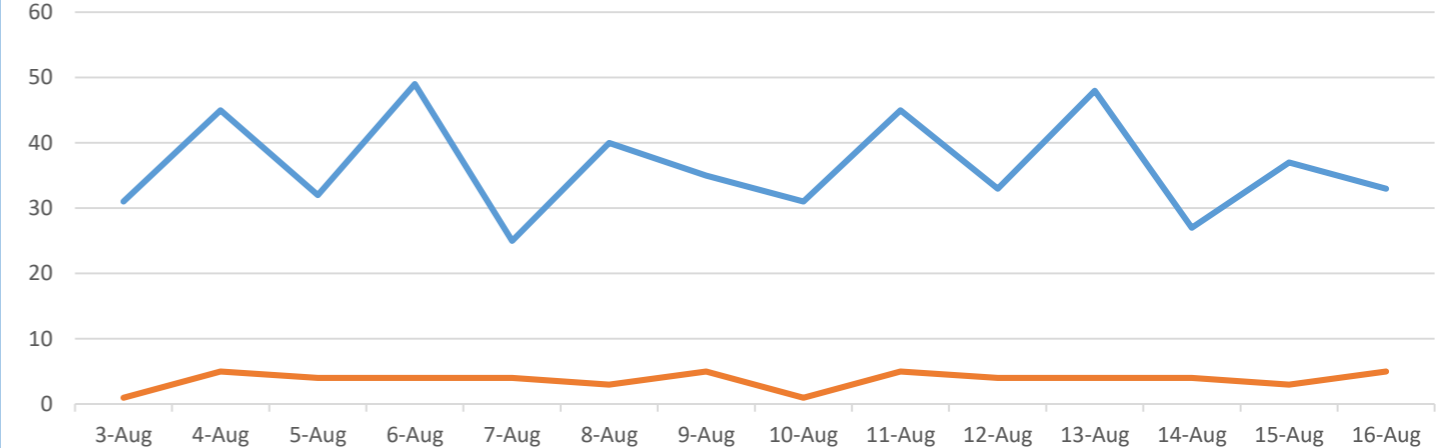
Source: Stats NZ and Customs

Change in international arrivals for the week ending 29 July compared to last week (22 July 2020)

88%

International Scheduled Flight Arrivals

Auckland forecast Christchurch

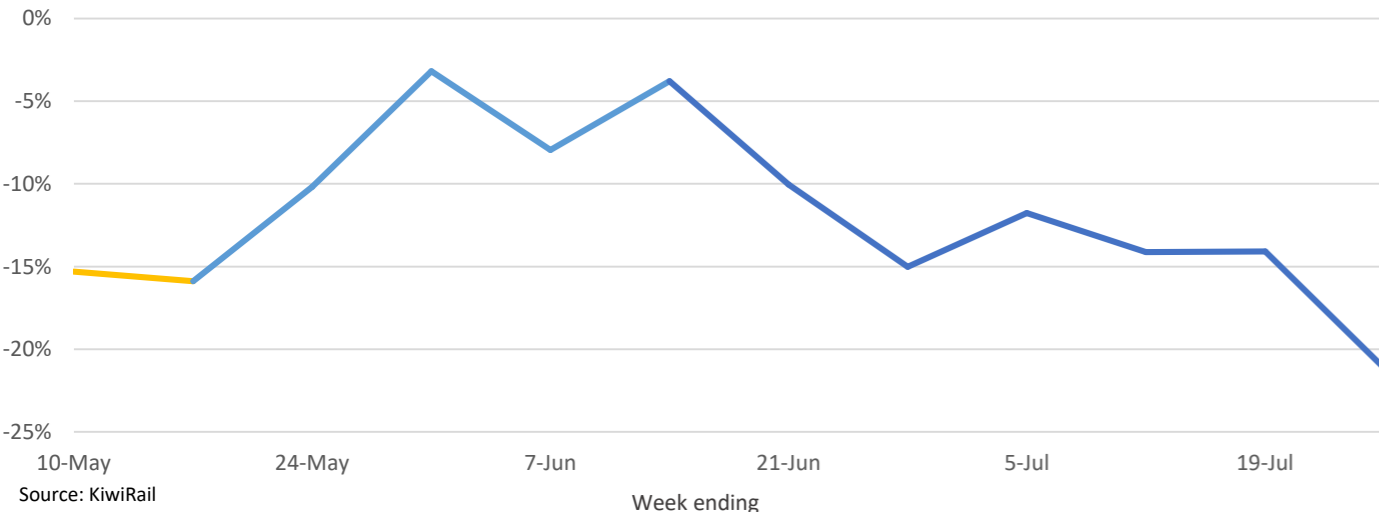


Source: Airport Corporation Limited

Rail Freight

Change in rail freight compared to same week last year

No alert level : Level 1 : Level 2 : Level 3 : Level 4



Source: KiwiRail

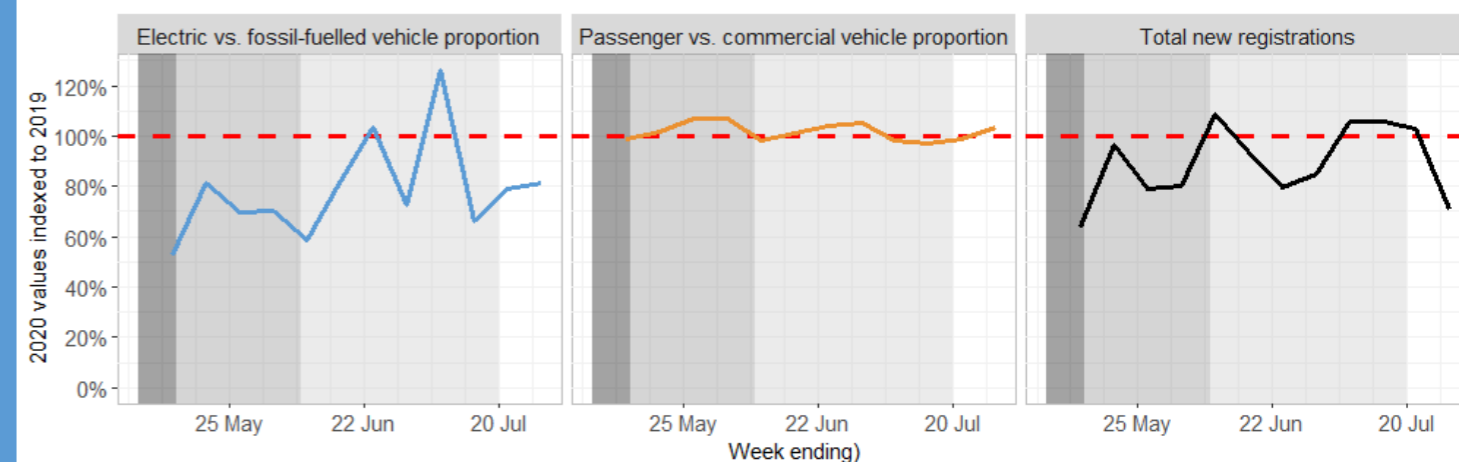
Rail freight compared to last week (19 July 2020)

11%

Motor Vehicle Registrations

Weekly new light-vehicle registrations (new & used imports)

2019 reference levels Covid alert level Level 1 Level 2 Level 3



Source: Ministry of Transport and Waka Kotahi MVR database

Key events:

- **28 February 2020** – First case of COVID-19 in NZ.
- **16 March 2020** – The New Zealand Government has announced temporary restrictions on travellers arriving in New Zealand from mainland China or Iran as a precautionary measure to protect against the spread of COVID-19. The restrictions prevent foreign nationals travelling from or transiting through mainland China or Iran from entering New Zealand. Cruise ships banned from entering until at least 30 June 2020.
- **20 March 2020** – The New Zealand border is closed to anyone who is not a New Zealand citizen or permanent resident.
- **21 March 2020** – Government announces COVID-19 alert system, and the country is initially set at Alert Level 2.
- **23 March** – Government moves country to Alert Level 3. Surge in demand for domestic air and inter-island services.
- **25 March** – A State of National Emergency is declared. At 11.59pm the country moves to Alert Level 4 and will remain at this level for at least four weeks.
- **26 March** – Public transport becomes free but can only be used by essential workers or for essential trips. Shared e-scooter services suspended.
- **27 March** – Domestic air travel and Cook Strait passenger services restricted to essential workers only.
- **3 April** – Foreign nationals returning home will be deemed “essential travel” and will be allowed to travel domestically (by air or land). Foreign governments can arrange charter flights to repatriate their citizens currently in New Zealand.
- **10 April** – Every Kiwi boarding a flight to return home will have to go into mandatory quarantine for 14 days, at least. This requirement, in a government facility, is a prerequisite for anyone entering the country.
- **16 April** – To support the movement of essential freight, non-essential freight that is already in the transport system can now be distributed and received, including de-vanning and delivery to businesses and customers. All freight can also enter and leave the country. The intention of the refinement is to clear the system so essential freight can move as freely as possible. This does not change the restrictions on non-essential businesses, who remain unable to trade under Alert Level 4, except to receive goods.
- **27 April 11.59pm** – New Zealand moves country to Alert Level 3.
- **13 May 11.59pm** – New Zealand moves to Alert Level 2.
- **8 May 11:59pm** – New Zealand moves to Alert Level 1, with no social distancing requirements on public transport.

Data enquiries:

Please refer all enquiries relating to ACL data to the Ministry of Transport in the first instance. For all other enquiries, please contact data source organisation relating to data used to generate graphs in this dashboard. Please note: We are not responsible for the quality or accuracy of data from external sources.

Ministry of Transport Freight Information Gathering System (FIGS) data presented in the graphs in this dashboard are provisional only. This data can be found within a detailed quarterly update that will be published on the ministry website: <https://www.transport.govt.nz/mot-resources/freight-resources/figs/>